

Learning in April



29th April 2022

Eastwood Day Nursery Newsletter—Issue 2

DIARY DATES

MAY 2022:

Monday 2nd—Bank Holiday closure

JUNE 2022:

Thursday 2nd & Friday 3rd June—Bank Holiday closure

Monday 6th—INSET closure

AUGUST 2022:

Thursday 25th—Wednesday 31st—Summer closedown

SEPTEMBER 2022:

Thursday 1st & Friday 2nd—INSET

Monday 5th—Day Nursery re-opens

Cases of chicken pox continue across the Day Nursery

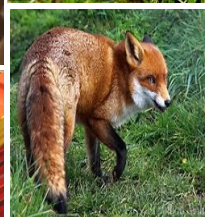
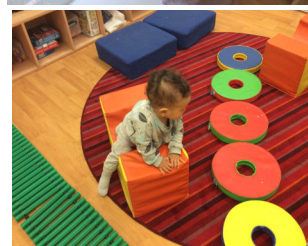
BLOSSOM CLASS



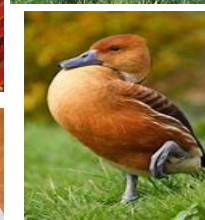
Blossom class have been showing a huge interest in painting on different surfaces, they have been exploring with patterns by using tape and paint.



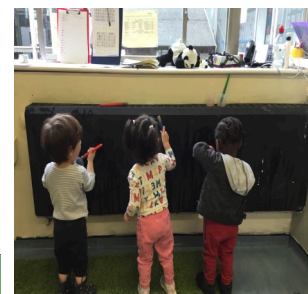
The children have also started their Forest School, soft play and heuristic sessions which have created lots of new and fun learning experiences



We welcomed some parents who joined us for hands on Easter activities and the children, were very excited during their outdoor Easter egg hunt.



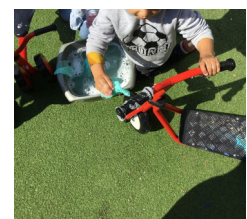
Welcome to all our new families and to Yaffa who will be working in Cedar class



OAK CLASS

In Oak Class the children have been busy mark making with paint, they have been practicing their large gross motor movements painting our outdoor shed.

The children have also been experimenting with marks using water to mark make on the chalk board. They have also been interested in transport and have made their own car wash.





HOUSEKEEPING

General reminders

The children have been learning lots about The Queen, their learning has been extended from the story 'Queen's Hat'. They have made maps of different landmarks around London and already have some extravagant plans in place to celebrate The Queen's Jubilee in June.

The children have been listening carefully to sounds in their environment and have been making nests for birds using natural resources that we have collected.

We have been reading and learning about space. The children experimented with height and distance by making their own paper rockets with straws. These were then taped onto footballs and travelled high up into the air.

Outdoors the children have also been playing a game of walk the line, which has been extended to moving the bikes and scooters along the tape.

We also celebrated Easter with a day of Easter activities.

- Children should be appropriately dressed for nursery and their clothes labelled with their names. Children will get messy at nursery so please provide extra clothes.
- Please keep us updated on your child's transition to Primary School. All information should be shared with edn@eastwood.wandsworth.sch.uk
- Please remember to collect your children on time to avoid being charged the late collection fee.
- **If you are going to be away on holiday, please notify us as soon as possible in writing. All absences should be emailed to edn@eastwood.wandsworth.sch.uk**
- Invoices are to be paid in full by no later than 1st of every month.
- Parents will be welcome to take home their children's Learning Journey's from 3rd May, we ask that you sign these out and return no later than 13th May.



Funding Eligibility

For more information and to check whether you are eligible for 2 year old or additional funding, please visit www.wandsworth.gov.uk/eecp